



Office Building **For Lease**

1845 TOWN CENTER BLVD , FLEMING ISLAND, FL 32003

FLEMING ISLAND BUSINESS PARK

VASHA CARTER **JOANN LYLE**
202.905.8578 904.377.0890
vcarter@svrcom.com jlyle@svrcom.com

FLEMING ISLAND BUSINESS PARK

1845 TOWN CENTER BLVD , FLEMING ISLAND, FL 32003



PROPERTY OVERVIEW

Nicely appointed property that can accommodate both office users and flex users. The building offers ample parking with easy access. Located in the heart of Fleming Island Town Center.

LOCATION OVERVIEW

Located in the heart of Fleming Island. The building is near the heavily trafficked intersection of US 17 and CR 220 conveniently located near retail/amenities. Located near retail shops such as Wal-Mart, Target, Publix, CVS, Starbucks, Home Depot, Michaels, Pet Smart, etc. The property is a reverse commute for Jacksonville residents.

SPACES	LEASE RATE	SPACE SIZE
Suite 2-270	\$14.00 SF/yr	2,000 SF
Suite 2-270	\$14.00 SF/yr	1,975 - 4,420 SF
Suite 2-215	\$14.00 SF/yr	3,861 SF

VASHA CARTER **JOANN LYLE**
 202.905.8578 904.377.0890
 vcarter@svrcom.com jllyle@svrcom.com

FLEMING ISLAND BUSINESS PARK

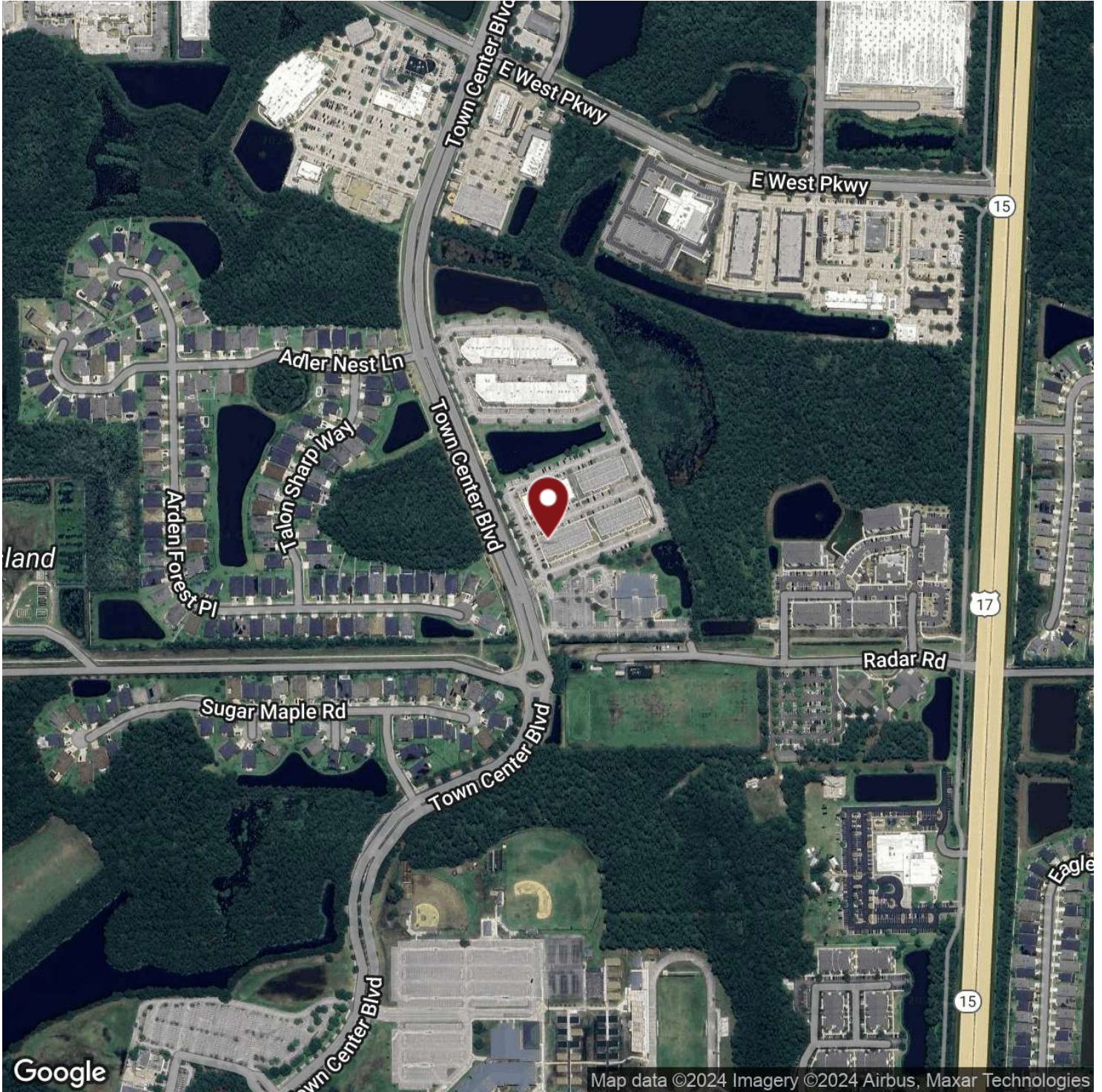
1845 TOWN CENTER BLVD , FLEMING ISLAND, FL 32003



VASHA CARTER **JOANN LYLE**
202.905.8578 904.377.0890
vcarter@svrcom.com jlyle@svrcom.com

FLEMING ISLAND BUSINESS PARK

1845 TOWN CENTER BLVD , FLEMING ISLAND, FL 32003

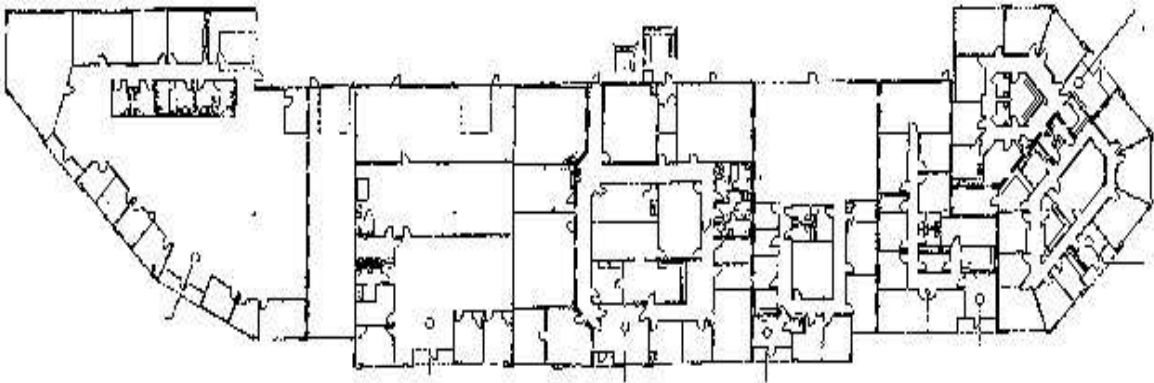


VASHA CARTER **JOANN LYLE**
202.905.8578 904.377.0890
vcarter@svrcom.com jlyle@svrcom.com

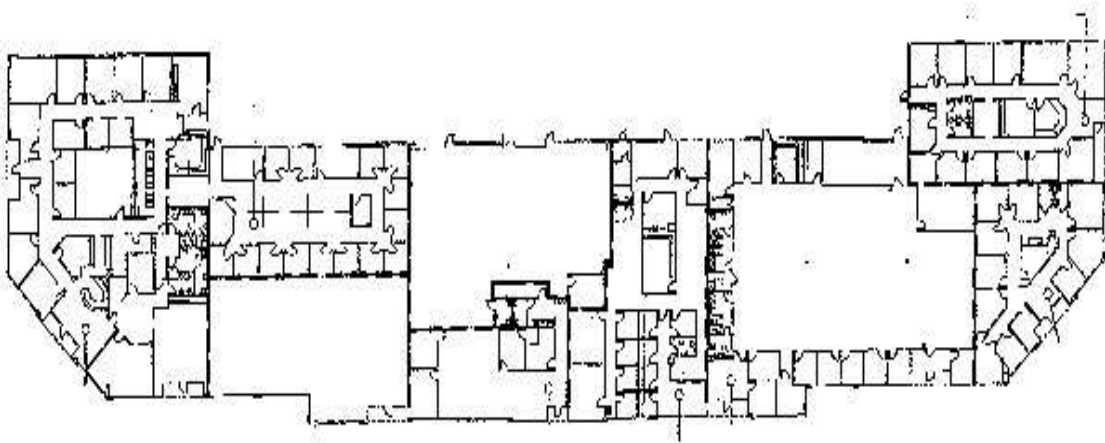


FLEMING ISLAND BUSINESS PARK

1845 TOWN CENTER BLVD , FLEMING ISLAND, FL 32003



BUILDING 100
FLEMING ISLAND BUSINESS PARK



BUILDING 200
FLEMING ISLAND BUSINESS PARK

VASHA CARTER **JOANN LYLE**
202.905.8578 904.377.0890
vcarter@svrcom.com jlyle@svrcom.com



FLEMING ISLAND BUSINESS PARK

1845 TOWN CENTER BLVD , FLEMING ISLAND, FL 32003



VASHA CARTER JOANN LYLE
202.905.8578 904.377.0890
vcarter@svrcom.com jlyle@svrcom.com



FLEMING ISLAND BUSINESS PARK

1845 TOWN CENTER BLVD , FLEMING ISLAND, FL 32003



VASHA CARTER

Commercial Advisor

Direct: 202.905.8578
vcarter@svrcom.com



JOANN LYLE

Commercial Advisor / Investment Acquisition

Direct: 904.377.0890 **Cell:** 904.377.0890
jlyle@svrcom.com

VASHA CARTER **JOANN LYLE**
202.905.8578 904.377.0890
vcarter@svrcom.com jlyle@svrcom.com