



JACKSONVILLE, FL 32218

0 BROWARD RD

JEFFREY TERWILLIGER **LENNY DEGIROLMO** **EVAN METZ**

607.745.0364

386.956.4143

904.837.5484

jterwilliger@svrrealtyfl.com

ldegirolmo@svrcom.com

emetz@svrcom.com

0 BROWARD ROAD

JACKSONVILLE, FL 32218



OFFERING SUMMARY

Sale Price:	\$625,000
Lot Size:	5.9 Acres
Zoning:	RLD-90

PROPERTY OVERVIEW

Excellent opportunity for a developer to acquire this ±5.9-acre parcel. Currently zoned RLD-90 with the potential to develop 14 lots.

LOCATION OVERVIEW

This property offers easy access to I-95 and less than a 6 min drive to the nearest grocery anchor Sams Club. Also, located just down the road, there are several other points of interest including Jacksonville Zoo and Gardens, Trout River, and St Johns River.

JEFFREY TERWILLIGER **LENNY DEGIROLMO** **EVAN METZ**
 607.745.0364 386.956.4143 904.837.5484
 jterwilliger@svrrealtyfl.com ldegirolmo@svrcom.com emetz@svrcom.com

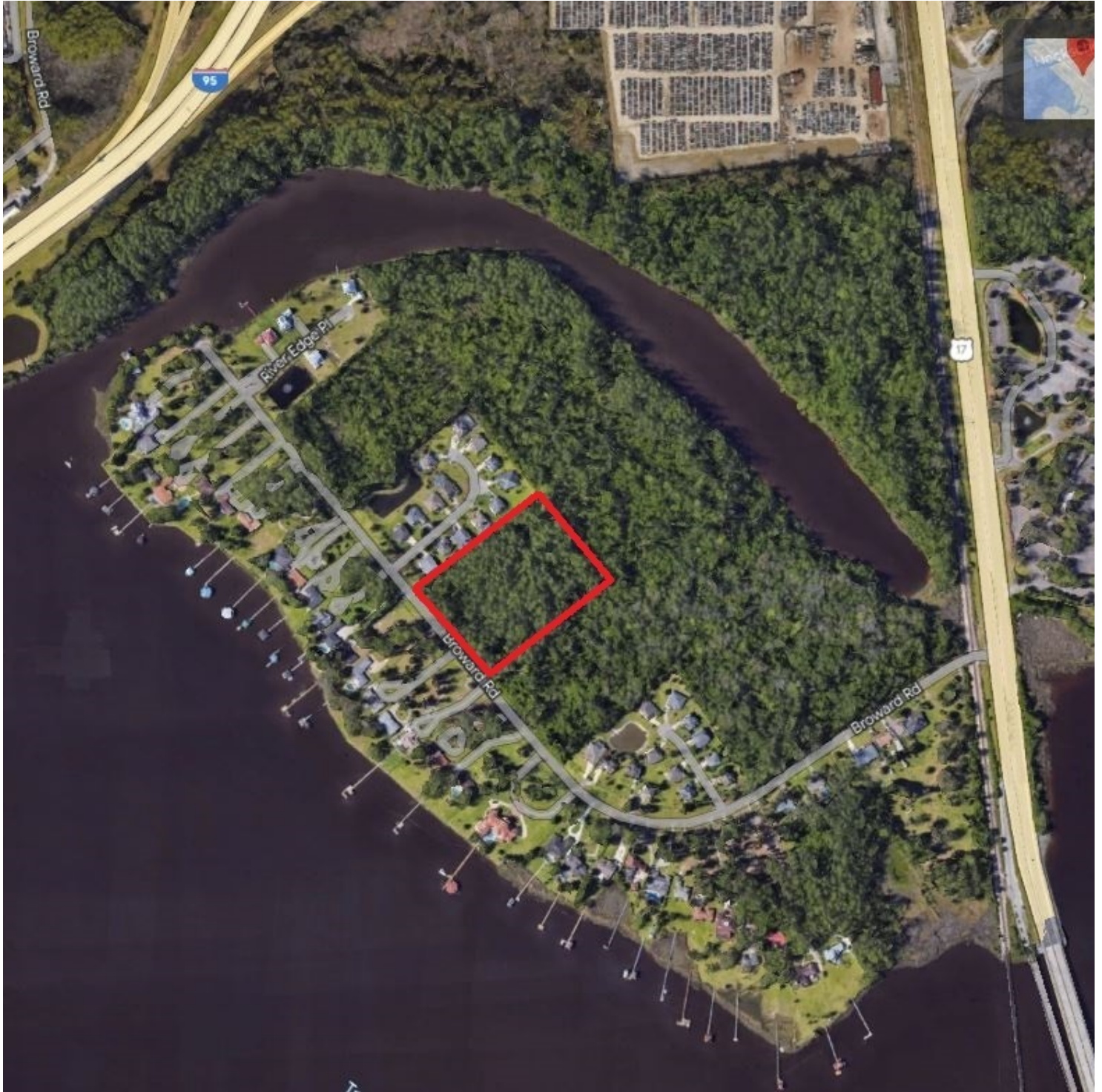
SVR Commercial, LLC • 100 Fairway Park Blvd Unit 2200 • PVB, FL 32082 • 904.454.3856

SVR
Commercial

svrcommercial.com

0 BROWARD ROAD

JACKSONVILLE, FL 32218



JEFFREY TERWILLIGER **LENNY DEGIROLMO** **EVAN METZ**
607.745.0364 386.956.4143 904.837.5484
jterwilliger@svrrealtyfl.com ldegirolmo@svrcom.com emetz@svrcom.com

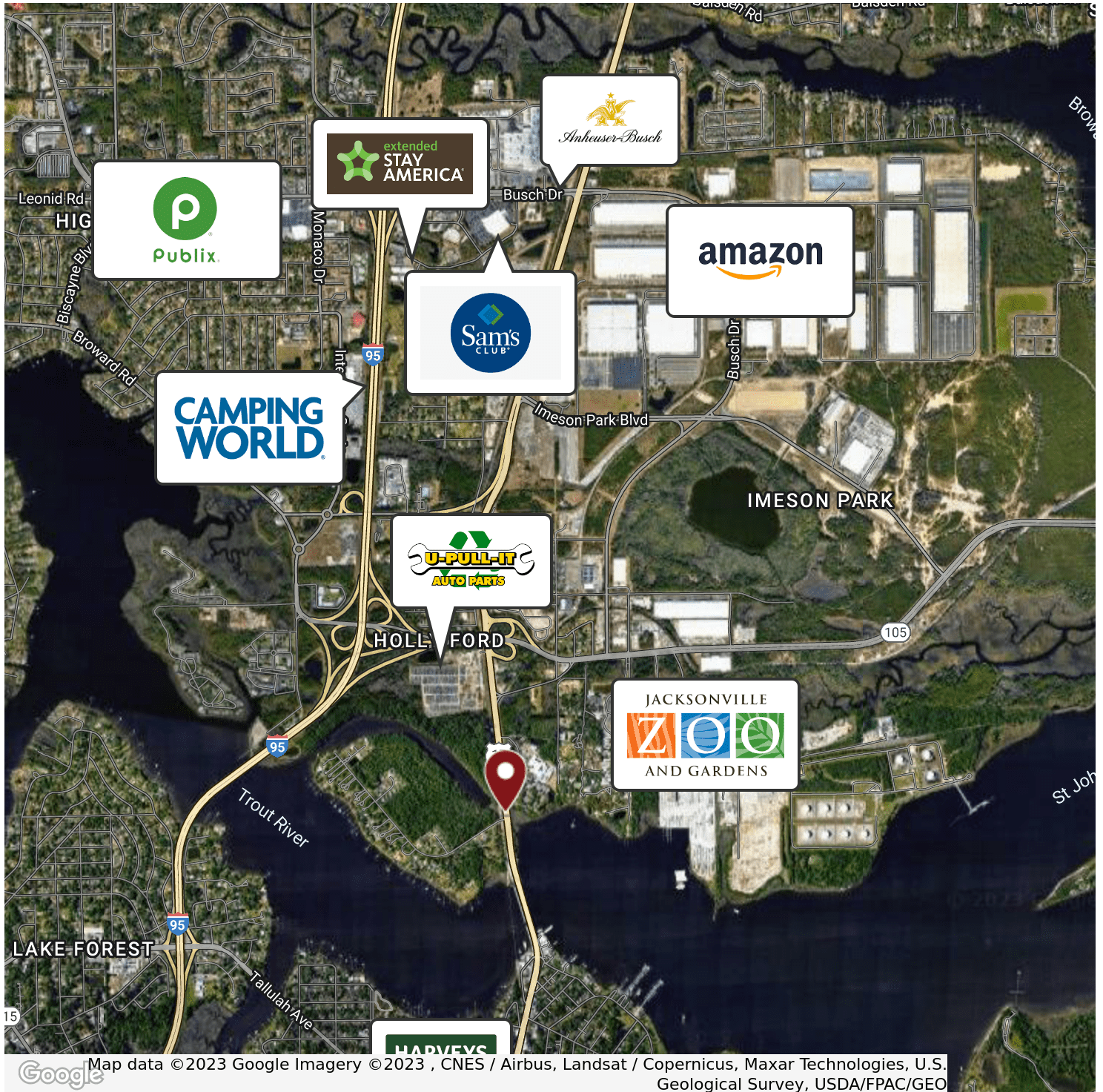
SVR Commercial, LLC • 100 Fairway Park Blvd Unit 2200 • PVB, FL 32082 • 904.454.3856

SVR
Commercial

svrcommercial.com

0 BROWARD ROAD

JACKSONVILLE, FL 32218



JEFFREY TERWILLIGER **LENNY DEGIROLMO** **EVAN METZ**
607.745.0364 386.956.4143 904.837.5484
jterwilliger@svrrealtyfl.com ldegirolmo@svrcom.com emetz@svrcom.com

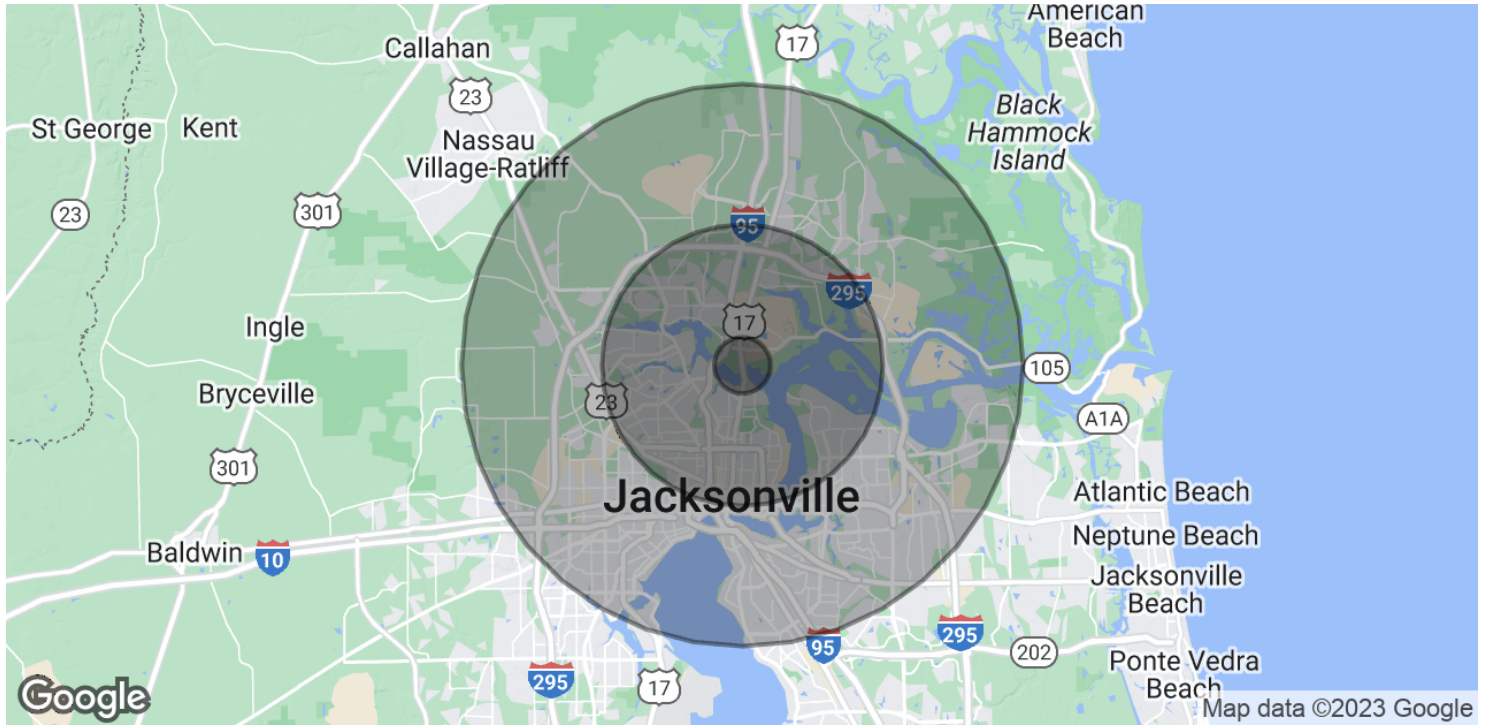
SVR Commercial, LLC • 100 Fairway Park Blvd Unit 2200 • PVB, FL 32082 • 904.454.3856



svrcommercial.com

0 BROWARD ROAD

JACKSONVILLE, FL 32218



POPULATION	1 MILE	3 MILE	5 MILE
2022 Population	3,082	48,190	164,727
2027 Population Projection	3,280	51,042	174,830
Annual Growth Projection ('22- '27)	1.3%	1.2%	1.2%

HOUSEHOLDS & INCOME	1 MILE	3 MILE	5 MILE
Total Households	1,343	18,948	62,894
Average HH Income	\$60,090	\$48,973	\$52,879

* Demographic data derived from 2020 ACS - US Census

JEFFREY TERWILLIGER 607.745.0364
 jterwilliger@svrrealtyfl.com

LENNY DEGIROLMO 386.956.4143
 ldegirolmo@svrcom.com

EVAN METZ 904.837.5484
 emetz@svrcom.com

